

John McInnis Auctioneers



May 28-Memorial Day Weekend Auction-Session 1

Saturday - May 28, 2016

May 28-Memorial Day Weekend Auction-Session 1



1: Patek Phillipe & Co 18K Pocket Watch

USD 2,000 - 3,000

Open face movement 18 jewels w/ 8 adjustments, movement measures approx. 37mm



2: Patek Phillipe 18K Gold Watch

USD 2,000 - 3,000

Open face movement 18 jewels w/ 8 adjustments, movement measures approx. 37mm



3: Patek Phillipe 18K Gold Pocket Watch

USD 2,000 - 3,000

Open face movement 18 jewels w/ 8 adjustments, movement measures approx. 37mm



4: 18K Gold Pocket watch

USD 150 - 300

Open face key wind movement signed Upjohn



5: 18K GOLD POCKET WATCH

USD 300 - 500

Movement measures approx. 37.3mm, key wind, signed A. Lavalette



6: 14K AMERICAN WALTHAM WATCH CO POCKET WATCH

USD 250 - 350

Size (10) lady's pocket watch in engraved hunter's case.



7: 18K GOLD AMERICAN WATCH CO. POCKET WATCH

USD 800 - 1,200

Key wound. Dial 1 1/2 inches. Chain not marked.



8: 14K GOLD AMERICAN WALTHAM WATCH CO. POCKET WATCH

USD 400 - 600

Bright cut and jeweled hunter's case, "Ella" inscribed on back lid. Velvet lined Waltham box not original to watch. Dial 1 1/4 inches.

May 28-Memorial Day Weekend Auction-Session 1



9: 14K GOLD WATCH CHAIN WITH 2 1/2 DOLLAR GOLD PIECE

USD 400 - 600

Marked 14K 21 inch gold chain with 1876 2 1/2 dollar gold piece, unmarked gold infant's ring, unmarked gold binocular charm and a unmarked gold gimbaled compass charm.



10: 18K GOLD KEY WIND LADIES POCKET WATCH WITH CHAIN

USD 800 - 1,200

Beautifully engraved. Hallmarked. Dial 1 1/4 inches. Chain and fobs marked 9 and 375. 21.8dwt.



11: 14K GOLD ELGIN 17 JEWEL POCKET WATCH

USD 300 - 500

1 inch dial. 3 inch unmarked chain.



12: 14K GOLD AMERICAN WATCH CO. POCKET WATCH

USD 400 - 600

Beautifully guilloche engraved case with floral motif. Signed William Ellery. Dial 1 1/4 inches.



13: AMERICAN WATCH CO. COIN SILVER KEY-WIND WATCH

USD 100 - 200

Early (19th c) engraved pocket watch with 1 3/4 inch dial.



14K GOLD ELGIN NATIONAL WATCH CO POCKET WATCH

USD 400 - 600

Beautiful hunter's case with rose, yellow and white gold basket weave front and back lids. Monogrammed shield and foliated engraved sides. 1 3/8 inch dial.



15: AMERICAN WALTHAM POCKET WATCH SIGNED PS BARTLETT

USD 150 - 250

Dueber coin hunters case engraved with stag. Touch mark "3". Dial



16: 14K GOLD POCKET WATCH CHAIN

USD 200 - 300

and fragments. 6.55dwt

May 28-Memorial Day Weekend Auction-Session 1



17: M. TOBIAS LIVERPOOL POCKET WATCH

USD 50 - 100

Cylinder escapement, four holes, jeweled. Case engraved with sailboat. Guilloché treated 1 3/4 inch dial.



18: ILLINOIS SPRINGFIELD WATCH CO. SILVER POCKET WATCH

USD 150 - 250

Signed Hoyt. Engraved open-face key wind coin silver case with 1 3/4 inch dial.



19: (2) 14K GOLD WATCH CHAINS AND FOBS

USD 200 - 300

Unmarked gold and agate oval fob and an onyx intaglio eagle spinning example. 13 inch chains marked 14k. (1) chain has unmarked gold cross charm. 15.45 dwt (chains only).



20: COIN SILVER ELGIN NAT. WATCH CO. POCKET WATCH

USD 200 - 300

Dial 1 5/8 inches. Together with watch chain and pocket knife.



21: 14K GOLD WALTHAM POCKET WATCH & A SECOND

USD 200 - 300

Waltham pocket watch with 1 inch dial is suspended from a Victorian gold filled monogrammed pin. Black mourning ribbon has 14k gold marked buckles. Together with Swiss pocket watch with pink 2 inch dial.



22: BRASS FOOTED POCKET WATCH STAND WITH TRAY

USD 50 - 100

Height 7 inches



23: 14K GOLD AMERICAN WATCH CO. POCKET WATCH

USD 700 - 900

Dial 1 1/2 inches.



24: 14K GOLD POCKET WATCH AND UNMARKED WRISTWATCH

USD 200 - 300

Pocket watch with 1 3/8 inch dial by Jules Mathey Locle, wrist watch unknown.

May 28-Memorial Day Weekend Auction-Session 1



25: JULES HUGUENIN LOCLE HUNTERS CASE POCKET WATCH

USD 300 - 500

Key wound full ruby jeweled. Engraved case with steamboat painted on 2 inch dial.



26: EARLY (19th c) SILVER HALLMARKED POCKET WATCH

USD 40 - 60

1 5/8 inch dial.



27: ILLINOIS ART DECO SEVEN SIDED POCKET WATCH

USD 200 - 300

Interior signed A. Lincoln. Dial 1 1/2 inches.



28: HAMILTON & BURLINGTON WATCH CO. POCKET WATCHES

USD 100 - 200

Hamilton lever set, 21 jewel, gold-filled case engraved with a locomotive. 1 5/8 inch dial. Burlington Watch Co. 21 jewel with 1 5/8 inch dial. Monogrammed hunter's case.



29: HAMILTON AND BURLINGTON POCKET WATCHES

USD 100 - 200

Each lever set, 21 jewels with gold filled 1 5/8 inch dials. Hamilton with embossed bezel rings.



30: (7) POCKET WATCH MOVEMENTS

USD 50 - 100

Including: C.H. Meylan Braoono, Matile Ducommum, Joseph Johnson Liverpoole, James Stoddart London, New York Watch Co., Audemars and Churmand and Co in its case.



31: ILLINOIS AND (2) WALTHAM WATCH CO. POCKET WATCHES

USD 40 - 60

(1) Engraved sterling case, lever set, 1 3/4 inch dial. (1) Illinois Watch Co., key wind, 1 3/4 inch dial. (1) Waltham, 10k engraved gold plated hunter's case, lever set, 1 3/4 inch dial.



32: (1) ENGLISH & (2) GIRARD-PERREGAUX POCKET WATCHES

USD 30 - 50

(1) Small coin silver swing out case with key wind movement, 1 3/8 inch dial. (2) Girard-Perregaux 7 jewel skeleton pocket watches with 1 1/2 inch dials.

May 28-Memorial Day Weekend Auction-Session 1



33: (2) ILLINOIS AND (1) WALTHAM POCKET WATCHES

USD 40 - 60

Waltham with engraved 20 year warranted gold-filled case, 17 jewels, winding crown, 1 3/4 inch dial. Together with (2) deco era examples with 17 jewels and winding crown. Dials 1 1/2 inches (each)



34: (18th c) NORTON OF LONDON POCKET WATCH

USD 200 - 300

Key wind. Pair case. Later chain with glass acorn fob. Dial 1 3/4 inches.



35: (3) GOLD FILLED POCKET WATCHES

USD 100 - 150

Including: Hamilton Watch Co., Knickerbocker and American Waltham with chain. 1 1/2 inch dials.



36: NEW YORK STANDARD WATCH CO POCKET WATCH

USD 75 - 125

Train engraved on back of case. Dial 1 3/4 inches. Together with a rose gold cameo locket (not marked)



37: 8199(3) VICTORIAN POCKET WATCHES ELLERY & COOPER

USD 50 - 100

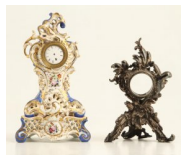
Each key wind. (2) J.P. and F.H. Cooper London, (1) William Ellery Boston. Dials 1 7/8 (and smaller)



38: CHARLES PETTENGILL QUINCY MA POCKET WATCH

USD 50 - 100

Open face 25 year case. Dial 1 1/2 inches.



39: (2) (19th c) FINE QUALITY ROCOCO WATCH STANDS

USD 100 - 300

Silver plated copper. Fitted for a 1 3/4 inch watch. Height 8 1/4 inches. Together with a porcelain example with base. Unmarked. Height 10 1/2 inches.



40: (3) INGERSOLL ECLIPSE RELIANCE & NEW HAVEN WATCHES

USD 30 - 50

Dials 1 3/4 inches (and smaller)

May 28-Memorial Day Weekend Auction-Session 1



41: (4) WALTHAM GOLD FILLED POCKET WATCHES

USD 50 - 75

(1) 17 jewels. Dials 1 1/2 inches.



42: (4) POCKET WATCHS-ELGIN PEERLESS NEW HAVEN

USD 40 - 60

And a forth unmarked but dated 1902. Dials 1 1/2 inches (and under)



43: REGENT POCKET WATCH AND FOB

USD 50 - 100

Dial 1 1/4 inches. Together with Royal Order of the Eagle fob.



44: (4) GOLD FILLED / PLATED POCKET WATCHES

USD 100 - 300

Including: NY Standard Watch Co., American Waltham, Columbia and Waltham. Dials 1 1/4 inches and under.



45: WALTHAM RIVERSIDE 17 JEWEL POCKET WATCH

USD 100 - 150

Hunter 25 year case guilloche engraved. Dial 1 5/8 inches.



46: (3) AMERICAN POCKET WATCHES

USD 50 - 100

Including: Hampden-Dueber Grand 17 jewel, Hamilton and Waltham 7 jewel. Dials 1 1/2 inches (and under)



47: (2) VICTORIAN GOLD FILLED WATCH FOBS AND CHAINS

USD 100 - 200

Including: Cigar cutter, "Crescent Cases" and locket. Together with a vest fob and chain.



48: (4) PENDENT POCKET WATCHES 3 WALTHAM & 1 WADSWORTH

USD 40 - 60

Dials 1 inch and under.

May 28-Memorial Day Weekend Auction-Session 1



49: ASSORTMENT OF POCKET WATCH KEYS

USD 50 - 100

(18th and 19th c.). (1) interesting key with bead.



50: AMERICAN & ELGIN NATIONAL WATCH CO. POCKET WATCHES

USD 100 - 150

Gold plated / filled. American Watch Co. is key wound, engraved case, beveled crystal. Elgin is lever set, engraved case. Each with 1 3/4 inch dial.



51: WALTHAM VANGUARD WIND INDICATOR POCKET WATCH

USD 200 - 300

Gold filled, 23 jewel, 5 position, lever set, engraved screw-off back, 1 5/8 inch dial.



52: WALTHAM "CRESENT" AND ILLINOIS POCKET WATCHES

USD 50 - 100

Waltham "Crescent" is 20 year warranted, lever set, 21 jewel, 1 5/8 inch dial. Illinois, 25 year warranted, winding crown, 21 jewels, adjusted 5 positions, monogrammed back and engraved cuvette. 1 1/2 inch dial.



53: (2) WALTHAM AND (1) ELGIN POCKET WATCHES

USD 50 - 100

Elgin (7) jewel, 10 year gold filled warranted hunter's case, crown wind, 1 5/8 inch dial. Waltham gold filled with engraved back, crown wind, 1 5/8 inch dial, Waltham Watch Co. 15 jewel, crown wind, glass back, 1 5/8 inch dial.



54: (2) AMERICAN WATCH CO. WALTHAM POCKET WATCHES

USD 50 - 100

(1) Sterling case with swing out movement, lever set, 1 3/4 inch dial. (1) Coin case with key wind movement, hinged back and face with beveled crystal. 1 3/4 inch dial.



55: GOLD FILLED WATCH CHAIN WITH (2) CHINESE FOB

USD 50 - 75

12 inch chain with (2) Asian mask fobs. Chain marked 14K 1/4.



56: VICTORIAN GOLD FILLED WATCH CHAIN WITH LOCKET

USD 50 - 100

Including 1 inch lock and slide clip. Length 19 inches.

May 28-Memorial Day Weekend Auction-Session 1



57: LOT OF POCKET WATCH CHAIN, FOBS AND PARTS

USD 50 - 100

(7) Chains mostly gold filled/ plated. Masonic, compass key, ball fobs and a variety of parts. Chains 15 inches (and under)



58: ANCRE SWISS 8 DAY AND WALTHAM POCKET WATCHES

USD 100 - 200

Ancre Swiss (8) day Spiral Breguet Levees Visable, hunter's case embossed with lions and jungle motifs, 7/8 inch dial on a 1 1/2 inch face. Open face Waltham with 1 5/8 inch dial.



59: ASSORTMENT OF (5) POCKET WATCHES

USD 150 - 300

Including: Westclox Scotty, Sekonda 18 jewel, Ingraham Sentinel, Henry Beguelin Full Jewel Patent Lever, F. Senn Franco-Swiss. Dials 1 3/4 inches (and smaller)



60: (3) COIN SILVER POCKET WATCHES

USD 100 - 200

Waltham, American and Hapden Watch Co., lever set, 1 3/4 inch dials.



61: WALTHAM 17 JEWEL SILVER POCKET WATCH

USD 30 - 50

Screw-off back and front. 1 3/4 inch dial.



62: ILLINOIS AND ELGIN POCKET WATCHES

USD 40 - 60

Swing-out cases, lever set. 1 3/4 inch dials



63: ILLINOIS, AMERICAN WALTHAM & WALTHAM POCKET WATCH

USD 50 - 100

Open face, 1 3/4 inch dials.



64: ILLINOIS AND HAMPDEN WATCH CO. POCKET WATCHES

USD 100 - 200

Hampden is lever set, 21 jewels, guilloche machined case. Illinois watch is lever set.

May 28-Memorial Day Weekend Auction-Session 1



65: ELGIN AND ILLINOIS POCKET WATCHES

USD 100 - 200

1 5/8 inch dials, lever set. Illinois is 17 jewel, gold filled. Elgin is 21 jewels.



66: "20th CENTURY" AND HAMILTON POCKET WATCHES

USD 100 - 300

Early Montgomery Ward Co. "20th. Century" pocket watch. Lever set, 1 3/4 inch dial. Created in "Silverine" (Nickel Silver-Coin Silver). Hamilton is 17 jewel with stag engraved on back of case.



67: ELGIN AND BURLINGTON POCKET WATCHES

USD 100 - 200

Elgin B.W. Raymond model, 21 jewels, 1 5/8 inch dial. Burlington gold plated, 21 jewels, 1 5.8 inch dial.



68: WH WILSON ELGIN ILLINOIS POCKET WATCH

USD 100 - 200

W.H. Wilson Cranbrook, B.C., 19 jewel, lever set, swing-out case, 1 3/4 inch dial with beveled crystal.



69: (2) SETH THOMAS & (1) C.H. PIXLEY POCKET WATCHES

USD 100 - 200

Each with gold filled or plated engraved cases. (1) Seth Thomas open faced with 1 3/4 inch dial, lever set. (1) Set Thomas hunter's case 1 3/4 inch dial, lever set. (1) C.H. Pixley, 1 3/4 inch dial, lever set.



70: (2) EARLY (20th c) LADIES WRIST WATCHES

USD 40 - 60

Waltham 14k white gold filled with 3/4 inch dial. New England watch with 1 inch dial.



71: (2) SMALL POCKET WATCHES- ELGIN AND WALTHAM

USD 40 - 60

Waltham is marked gold filled. Elgin has chain. Dials approx. 1 1/2 inches each.



72: ELGIN NATIONAL WATCH CO. KEY-WIND POCKET WATCH

USD 75 - 125

Signed H.H. Taylor. Dial 1 3/4 inches. Together with chain and key.

May 28-Memorial Day Weekend Auction-Session 1



73: (3) SMALL POCKET WATCHES INCLUDING WALTHAM

USD 50 - 100

American Waltham, Waltham (sterling) with Railroad fob and chain and a third unidentified example. Dials 1 inch and under.



74: SMITH PATTERSON 12K GOLD FILLED CHILDS WRIST WATCH

USD 30 - 50

Dial 1/2 inch.



75: ENDURA SWISS ART DECO PENDENT WATCH

USD 50 - 75

Dial 1 inch. 24 inch chain.



76: TIFFANY & CO TRAVELING REPEATER CLOCK WITH CASE

USD 500 - 700

6 x 3 1/2 x 3 inches. Original travel case and instructions.



77: 1890 REPEATER CARRIAGE CLOCK BY WM BOND BOSTON

USD 400 - 600

Retailed by Bigelow Kennard. Height 7 inches (including handle). Together with its original travel case.



78: FINE QUALITY REPEATER CARRIAGE CLICK

USD 500 - 1,000

Neo-classical brass and bell metal case with intricate applied banding. Unmarked. 7 x 3 3/4 x 3 inches.



79: AIGUILLES MINIATURE BRASS CARRIAGE CLOCK

USD 100 - 200

French key wind. Height 3 inches.



80: MATTHEO NORMAN CARRIAGE CLOCK SWISS MADE

USD 100 - 200

"Smithsonian" 1 1/2 inch dial. 5 1/2 x 3 x 2 1/2 (including handle)

May 28-Memorial Day Weekend Auction-Session 1



81: GILT BRASS MINIATURE CARRIAGE CLOCK

USD 100 - 200

Height 3 1/4 inches.



82: SWISS REPEATER TRAVEL CLOCK

USD 100 - 200

Unmarked. Dial 2 inches



83: OVAL BRASS CARRIAGE CLOCK

USD 50 - 100

Unmarked (probably French). Height 4 1/2 inches.



84: MINIATURE ART DECO TRAVEL ALARM CLOCK

USD 50 - 100

Nickel plated brass. Height 2 3/4 inches.



85: (3) DETEX CORPORATION WATCHMAN'S CLOCKS

USD 100 - 200

Complete with keys and leather cases. Diameter 7 inches (and smaller)



86: BRASS SHIP'S BELL 8 DAY MARITIME CLOCK

USD 100 - 150

8 Day Maritime Clock 3 South St. New York. Movement unsigned. 5 1/4 inch dial. Overall height including base 8 3/4 inches.



87: SETH THOMAS CORSAIR SHIPS BELL CLOCK

USD 100 - 200

Serial number E537-000. 4 inch dial. German movement. Together with mahogany stand.



87A: SETH THOMAS MANTEL CLOCK

USD 100 - 200

Seth Thomas mantel clock with ormolu mounted neo-classical mahogany case. Dial 3 1/2 inches. Signed movement with chime. 11 x 9 1/2 x 5 inches.

May 28-Memorial Day Weekend Auction-Session 1



88: CHELSEA / ABERCROMBIE AND FITCH BRONZE DESK SET

USD 100 - 200

Chelsea clock and barometer with 4 1/2 inch dial. Bronze standing frame. 6 x 12 inches.



89: CHELSEA 8 DAY AUTOMOBILE DASH CLOCK

USD 100 - 200

2 3/4 inch dial with beveled crystal. Interesting wind configuration.



90: FRENCH "PAPERWEIGHT" DESK CLOCK WITH ALARM

USD 200 - 300

Cast Classical Revival case mounted to octagonal marble base. 1 1/2 inch porcelain dial.



91: (2) WALTHAM WATCH CO AUTOMOBILE DASH CLOCKS

USD 200 - 300

(1) Waltham 2 1/2 inch dial mounted to a circa 1920 frame on stand. Height 7 inches. (1) Waltham Watch Co. 8 Day with 3 1/4 inch dial. set in a later 20th c. wall mount frame. Height 9 inches. Each with seconds sweep.



92: (2) DOXA (8) DAY SWISS TRAVEL CLOCKS AAA Auto

USD 100 - 300

(1) retailed by A. Stowell & Co the second is monogrammed AAA (Auto Association)



93: FRENCH C.H. DEPOSE TRAVEL CLOCK WITH CHERUBS

USD 75 - 125

Cherub painted dial signed Ciry. Retailed by Finnigans Jewellers London. 2 1/2 x 2 1/2 inches. Original tooled leather box.



94: LOT OF WRIST WATCHES, TRAVEL AND ALARM CLOCKS

USD 100 - 200

Koma Crystal Regulator, Enver, Westclox Big Ben alarm clock, Europa travel clock, small German travel clock and (6) wristwatches, Westclock, Omega, Basis, Bradley, Timex etc.



95: LE COUTRE ATMOS SWISS SHELF CLOCK

USD 300 - 500

Perpetual movement. 9 1/2 x 7 1/2 x 5 1/2 inches.

May 28-Memorial Day Weekend Auction-Session 1



96: SWISS LE COUTRES ATMOS MANTLE CLOCK

USD 300 - 500

9 x 6 1/2 x 5 inches.



97: (Mid 20thc) KAISER ORBITAL BIRD CAGE CLOCK GERMANY

USD 200 - 300

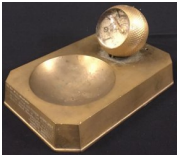
Circa 1940s keyless wind alarm function movement, orbital style display with Arabic numerals showing hours and minutes, the clock modeled as a bird in a brass cage. Height



98: BRONZE NOVELTY CLOCK WITH VILLAGE CLOCK TOWER

USD 100 - 150

Desk clock of bronze frame, beveled glass and onyx based. Height 5 inches.



99: JEAGER NOVELTY PRESENTATION GOLF BALL DESK CLOCK

USD 40 - 60

"(1) Millionth Bendix Drive Manufactured in France" bronze. 2 3/4 x 6 x 4 inches.



100: VICTORY-V CONFECTIONS NOVELTY CLOCK AND TINS

USD 100 - 300

Victory "V" Gum & Lozenges clock tin, colorful litho on embossed tin front w/elaborate Egyptian scene, back has advertising for Victory "V" Gums & Lozenges, Fryer & Co. Ltd., Nelson, Lancs., a very unusual gum item. 10 x 14 x 4 1/4 and pair of tins 11 inches.



101: MURRAY & HEATH LONDON OAK CASED BAROMETER

USD 100 - 300

Victorian carved oak with thermometer. Height 26 inches.



102: BRASS WALL THERMOMETER / BAROMETER

USD 50 - 100

Centigrade and Fahrenheit Thermometers beneath Barometer. Dial 6 1/2 inches diameter.



103: TIFFANY & CO MULTI-CHIME CARVED OAK TALL CLOCK

USD 8,000 - 12,000

Renaissance revival case by Tobey Furniture Co. Chicago with brass and silvered brass dial marked "Tiffany & Co." Elaborate multi-chimed movement marked by "J.J. Elliot Co. LTD of London" with date and moon phase features. Quarter sawn oak case is extensively carved. The bonnet having lion carved crest with 3 dimensional bagpiper flanking dial. Waist carved with egg and dart and gadrooned molding, acanthus leaves, swags and bows, lions, cherubs, and tapering columns with leaves and geometric shapes. Glazed pendulum door is heavily carved with open scrolls, fruit and lion. Base carved with lion, tapering stacking coin carved columns and tablet with outdoor Renaissance scene. 102 x 23 x 18 inches

May 28-Memorial Day Weekend Auction-Session 1



104: (19th c) ASTRONOMICAL REGULATOR MOVEMENT

USD 2,000 - 3,000

9 1/2 inch enamel dial with machined gilt bronze bezel and lyre pendulum. Unmarked. Approx. 60 inches.



105: (18th / 19th c) FEDERAL PERIOD BRIDE'S CLOCK

USD 1,000 - 1,500

In the manner of Aaron Willard. 34 1/2 x 14 x 6 inches. Commonly called "bride's" clocks, these white painted clocks are rare variants of the "dish" dial glass front shelf clocks. Other Federal forms found in off-white paint include chairs, dressing tables, and wall clocks.



106: FEDERAL PERIOD MAHOGANY TALL CLOCK CASE

USD 800 - 1,200

Molded hood with brass finials, pierced fretwork, ormolu mounted columns. Waist with fluted quarter columns, glazed arched pendulum door and paneled base with bracket feet. 87 1/2 x 19 1/2 x 10 inches.



107: SETH THOMAS PILLAR AND SCROLL SHELF CLOCK

USD 300 - 500

Mahogany case with eglomise and reverse painted tablet. Weight driven movement with strike. 10 1/2 inch dial. 29 x 16 x 4 1/2 inches



108: SETH THOMAS PILLER AND SCROLL SHELF CLOCK

USD 100 - 200

Weight driven movement with strike. 30 x 17 1/2 inches.



109: CHAUNCEY JEROME ROSEWOOD SHARP GOTHIC SHELF CLOCK

USD 200 - 300

(8) Day movement with strike. "Time Cut Down All Both Great and Small" tablet. Height 20 inches.



110: CHELSEA BANJO CLOCK PERRY'S LAKE ERIE VICTORY

USD 300 - 500

Spring driven. 5 inch dial. Height 32 inches.



111: CHELSEA BANJO CLOCK CONSTITUTION & GUERRIERE

USD 300 - 500

Spring driven. 5 inch dial. Height 32 inches. Retailed by Shreve, Crump & Low Co.

May 28-Memorial Day Weekend Auction-Session 1



112: CHELSEA BRONZE TAMBOUR #1 MANTLE CLOCK WITH STRIKE

USD 500 - 1,000

Silvered 6 inch dial with raised arabic numerals, serpentine hands and 8 day time and "House strike" lever escapement housed in brass ball footed case. 16 1/2" x 5" x 10 3/4"



113: CHELSEA TAMBOUR #1 BRASS MANTLE CLOCK WITH STRIKE

USD 400 - 600

Silvered 5 inch dial with raised arabic numerals, serpentine hands and 8 day time and "House strike" lever escapement housed in brass ball footed case. 9 x 13 x 4 1/2 inches.



114: GASTON JOLLY A PARIS EMPIRE ORMOLU MANTLE CLOCK

USD 5,000 - 10,000

"Cherub group possibly representing the Arts and Sciences" unmarked. 17 x 18 x 5 inches.



115: FRENCH LOUIS XVI LEROLLE FRERES SHELF CLOCK

USD 3,000 - 4,000

White marble with ormolu mount, onyx urn, swags of fruit, ropes of leaves, bows, beads and scrolled frieze. Handles draped with cornucopias. (6) Gilt bronze feet. (4) inch dial with beveled crystal, movement with strike is signed L.F. #19725. 14 1/2 x 11 x 5 1/2 inches.



116: A.D. MOUGIN DEUX MEDAILLES PARIS MANTLE CLOCK

USD 300 - 600

Gilt bronze and white marble, strike, 3 inch dial. Retailed by Lenoir Paris. Height 18 inches.



117: HANGING BRASS CARRIAGE CLOCK WITH STAND 1878

USD 200 - 300

Clock freely swings. United States patent 1878. 2 inch dial. Height 8 inches.



118: (19th c) FRENCH FIGURAL GILT BRONZE MANTLE CLOCK

USD 1,500 - 2,500

Beautifully robed woman drops vase before fountain. Movement unmarked. 4 inch porcelain dial signed Paris. Height 14 1/2 inches (including marble base and bronze bun feet)



119: CHARLES TAYOR & SON GILT ORMOLU MANTLE CLOCK

USD 500 - 1,000

Gilt bronze figural mantel clock with stunning Pompeiian-themed porcelain panels. Height 14 inches (not including conforming base.

May 28-Memorial Day Weekend Auction-Session 1



120: ALFRED MERRICK FUSEE STEEPLE SKELETON CLOCK

USD 400 - 600

Signed "Alfred Merrick Eton 1863". Mounted to walnut base with glass dome. Height



121: (19thc) FRENCH PORTICO PILLAR CLOCK

USD 500 - 1,000

Movement with strike unmarked. Cast ebony case, ormolu mounts with cornucopia swag, helmet and instruments . 4 1/2 inch dial.



122: GILBERT CLOCK CO. ONYX & CHAMPLEVE MANTEL CLOCK

USD 200 - 300

Signed movement with strike. 3 1/2 inch dial. Height 13 inches.



123: SETH THOMAS CRYSTAL REGULATOR EMPIRE #32

USD 300 - 500

Bust of European maiden surmounts traditional case flanked by classical glass columns decorated with gilt leaf and berry motif and footed base which conforms to base. Seth Thomas movement with 4 inch dial and strike. 20 x 12 1/2 x 6 1/2



124: 1889 L. MARTI & CO. TIFFANY MANTLE CLOCK

USD 700 - 1,000

Ormolu mounted cut crystal case. L. Marti & Co. pendulum movement with strike. 3 inch dial. 11 x 6 x 5 inches.



125: FRENCH JAPY FRERES ORMOLU MOUNT SHELF CLOCK

USD 300 - 500

Hand painted porcelain urn dial and tablets with its original conforming base. Height 13 inches (without base)



126: FRENCH PORCELAIN MANTLE CLOCK

USD 100 - 200

Hand painted porcelain case signed Fabien with ormolu mounts. 4 inch dial. Works signed Marti. Height 15 inches.



127: ROYAL BONN PORCELAIN MANTLE CLOCK

USD 200 - 300

Beautiful hand painted floral decoration. French movement appears to read Franue?. 2 1/2 inch dial. Height 8 inches.

May 28-Memorial Day Weekend Auction-Session 1



128: DELFT MANTLE CLOCK with DENIERE PARIS MOVEMENT

USD 200 - 300

Porcelain case decorated in blue Dutch landscapes with gilt highlights. Stunning black 4 1/2 inch dial, strike. Height 12 inches.



129: TIME RECORDER SUPPLY & MAINTENANCE TIME CLOCK

USD 300 - 500

Antique mechanical punch clock. Oak case. 38 x 13 x 11 inches.



130: LARGE SESSIONS ADVERTISING WALL CLOCK

USD 300 - 400

Tablet painted "Swap and Herbst Jewelers Cash or Credit Lawrence". Pendulum clock with 11inch dial. 38 x 16 inches.



131: VICTORIAN R-A REGULATOR WALL CLOCK MADE IN GERMANY

USD 100 - 300

Hand painted and lined with mother-of-pearl. 5 inch dial. Height 34 inches.



132: VICTORIAN CARVED SHELF CLOCK WITH (5) CHIMES

USD 1,000 - 1,500

Oak case carved with leaves, columns, scrolls, aesthetic elements and pierced gingerbread vents. Fusee movement with (5) chimes. Retailed by Connell Co, London. 33 1/2 x 17 x 11 inches.



133: WINTERHALDER & HOFMEIER BLACK FOREST SHELF CLOCK

USD 500 - 1,000

Floral carved case with brass mounts including suns, handle, 5 inch dial with strike. Together with its companion wall-mount shelf. Clock measures 16 x 9 x 7 1/2 inches. Shelf height is 14 inches.



134: BIGILOW KENNARD MEDAILLE D'ARGENT SHELF CLOCK

USD 600 - 1,000

Impressive arch top carved mahogany case with marquetry inlay, scroll work and lion paw feet. 17 x 14 x 9 inches.



135: SETH THOMAS SHELF CLOCK

USD 200 - 300

Aesthetic Movement mahogany case, 8 inch dial, weight driven movement and strike. 29 1/2 x 16 x 6 1/2 inches.

May 28-Memorial Day Weekend Auction-Session 1



136: WALTHAM MAHOGANY MANTLE CLOCK WITH STRIKE

USD 100 - 200

Arched case with columns and paneled face. 5 inch dial with beveled crystal. 13 x 9 x 6 inches. Retailed by Theo. B Starr.



137: ANSONIA EIGHT DAY HENLEY SHELF CLOCK WITH STRIKE

USD 75 - 125

Lancet-form gothic case, 4 inch dial. Height 12 1/2 inches



140: CASE STEAM SCALE MODEL GENERAL PURPOSE TRACTOR

USD 4,000 - 6,000

Finely detailed and well engineered 1:8 scale mechanical model of a Case compound engine steam tractor or general purpose engine. 11 1/2 x 16 1/2 x 8 inches. Note: By Arnold Edmund Thompson (1931-2010) Marblehead, MA. In the early 1950's during his USAF tour he perfected his plane models. He became a master machinist and his true passion was building trains, boats and anything mechanical. He was a member of the Marblehead Model Yacht Club, The New England Live Steamers and the Brotherhood of Live Steamers.



141: HAND MACHINED STEAM BOILER WITH FURNACE

USD 50 - 100

Steel, copper, glass, wood. Height 15 1/2 and 7 1/2 inches. Note: By Arnold Edmund Thompson (1931-2010) Marblehead, MA. In the early 1950's during his USAF tour he perfected his plane models. He became a master machinist at General Electric in Lynn. His true passion was building trains, boats and anything mechanical. He was a member of the Marblehead Model Yacht Club, The New England Live Steamers and the Brotherhood of Live Steamers.



142: HAND MACHINED VERTICLE BOILER

USD 300 - 500

Working boiler. copper, steel, aluminum. Height 17 1/2 inches. Signed Arnold Thompson Note: Arnold Edmund Thompson (1931-2010) Marblehead, MA. In the early 1950's during his USAF tour he perfected his plane models. He became a master machinist at General Electric in Lynn. His true passion was building trains, boats and anything mechanical. He was a member of the Marblehead Model Yacht Club, The New England Live Steamers and the Brotherhood of Live Steamers.



143: HAND MACHINED OSCILLATING CYLINDER STEAM ENGINE

USD 100 - 200

Brass, steel, copper and wood. 7 x 6 x 4 inches. Note: Arnold Edmund Thompson (1931-2010) Marblehead, MA. In the early 1950's during his USAF tour he perfected his plane models. He became a master machinist at General Electric in Lynn. His true passion was building trains, boats and anything mechanical. He was a member of the Marblehead Model Yacht Club, The New England Live Steamers and the Brotherhood of Live Steamers.



144: HAND MACHINED WORKING STEAM ENGINE AND BOILER

USD 200 - 300

Brass, steel, copper and wood. 9 1/2 x 8 x 4 inches. Note: By Arnold Edmund Thompson (1931-2010) Marblehead, MA. In the early 1950's during his USAF tour he perfected his plane models. He became a master machinist at General Electric in Lynn. His true passion was building trains, boats and anything mechanical. He was a member of the Marblehead Model Yacht Club, The New England Live Steamers and the Brotherhood of Live Steamers.

May 28-Memorial Day Weekend Auction-Session 1



145: HAND MACHINED WORKING SINGLE CYLANDER STEAM ENGINE

USD 200 - 400

Steel, copper, aluminum and wood. signed. 4 1/2 x 10 x 5 inches. Note: Arnold Edmund Thompson (1931-2010) Marblehead, MA. In the early 1950's during his USAF tour he perfected his plane models. He became a master machinist at General Electric in Lynn. His true passion was building trains, boats and anything mechanical. He was a member of the Marblehead Model Yacht Club, The New England Live Steamers and the Brotherhood of Live Steamers.



146: HAND MACHINED WWII HIGH CALIBER NAVY DECK GUN

USD 200 - 300

Brass and aluminum working model. Signed. 5 x 8 1/2 x 4 inches. Note: Arnold Edmund Thompson (1931-2010) Marblehead, MA. In the early 1950's during his USAF tour he perfected his plane models. He became a master machinist at General Electric in Lynn. His true passion was building trains, boats and anything mechanical. He was a member of the Marblehead Model Yacht Club, The New England Live Steamers and the Brotherhood of Live Steamers.



147: HAND MACHINED MODEL OF LARGE STEAM ENGINE

USD 200 - 300

Cast iron, steel and brass model of a large single cylinder engine. Signed. Height 8 1/2 inches. Note: Arnold Edmund Thompson (1931-2010) Marblehead, MA. In the early 1950's during his USAF tour he perfected his plane models. He became a master machinist at General Electric in Lynn. His true passion was building trains, boats and anything mechanical. He was a member of the Marblehead Model Yacht Club, The New England Live Steamers and the Brotherhood of Live Steamers.



148: HAND MACHINED (2) CYLINDER STEAM ENGINE

USD 200 - 300

Working model. brass and aluminum. Height 6 inches. signed. Note: Arnold Edmund Thompson (1931-2010) Marblehead, MA. In the early 1950's during his USAF tour he perfected his plane models. He became a master machinist at General Electric in Lynn. His true passion was building trains, boats and anything mechanical. He was a member of the Marblehead Model Yacht Club, The New England Live Steamers and the Brotherhood of Live Steamers.



149: HAND MACHINED STEAM ENGINE WITH BOILER

USD 200 - 300

Operational model potentially to be incorporated into a steam locomotive. Steel, copper and brass. 9 x 19 x 6 inches. Note: Arnold Edmund Thompson (1931-2010) Marblehead, MA. In the early 1950's during his USAF tour he perfected his plane models. He became a master machinist at General Electric in Lynn. His true passion was building trains, boats and anything mechanical. He was a member of the Marblehead Model Yacht Club, The New England Live Steamers and the Brotherhood of Live Steamers.



150: HAND MACHINED STEAM ENGINE WITH THROTTLE

USD 300 - 500

Steel, brass and copper. signed. 8 x 7 x 4 inches. Note: Arnold Edmund Thompson (1931-2010) Marblehead, MA. In the early 1950's during his USAF tour he perfected his plane models. He became a master machinist at General Electric in Lynn. His true passion was building trains, boats and anything mechanical. He was a member of the Marblehead Model Yacht Club, The New England Live Steamers and the Brotherhood of Live Steamers.



151: CASE STEAM SCALE MODEL GENERAL PURPOSE TRACTOR

USD 4,000 - 6,000

Finely detailed and well engineered 1.8 scale mechanical model of a Case compound engine steam tractor or general purpose engine. 10 x 20 x 8 inches. Note: By Arnold Edmund Thompson (1931-2010) Marblehead, MA. In the early 1950's during his USAF tour he perfected his plane models. He became a master machinist at General Electric in Lynn. His true passion was building trains, boats and anything mechanical. He was a member of the Marblehead Model Yacht Club, The New England Live Steamers and the Brotherhood of Live Steamers.

May 28-Memorial Day Weekend Auction-Session 1



152: HAND MACHINED TWO-CYLINDER STEAM ENGINE

USD 300 - 500

Brass, copper and steel. 8 1/2 x 5 x 3 inches. Signed Arnold Thomas. Note: Arnold Edmund Thompson (1931-2010) Marblehead, MA. In the early 1950's during his USAF tour he perfected his plane models. He became a master machinist at General Electric in Lynn. His true passion was building trains, boats and anything mechanical. He was a member of the Marblehead Model Yacht Club, The New England Live Steamers and the Brotherhood of Live Steamers.



153: HAND MACHINED GAS POWERED WORKING ENGINE

USD 500 - 700

(4) Cylinder twin valve engine. E. Wall Chicago engine block with most other parts hand machined by Thompson. 7 x 13 1/2 x 7 inches. Note: Arnold Edmund Thompson (1931-2010) Marblehead, MA. In the early 1950's during his USAF tour he perfected his plane models. He became a master machinist at General Electric in Lynn. His true passion was building trains, boats and anything mechanical. He was a member of the Marblehead Model Yacht Club, The New England Live Steamers and the Brotherhood of Live Steamers.



154: HAND MACHINED WORKING STEAM POWERED DONKEY

USD 100 - 300

Cast iron, brass and copper. unsigned. Donkey attached to a work job. 12 x 8 x 3 inches. Note: Arnold Edmund Thompson (1931-2010) Marblehead, MA. In the early 1950's during his USAF tour he perfected his plane models. He became a master machinist at General Electric in Lynn. His true passion was building trains, boats and anything mechanical. He was a member of the Marblehead Model Yacht Club, The New England Live Steamers and the Brotherhood of Live Steamers.



155: c.1953 LIONEL "O GAUGE" TRAIN SET

USD 300 - 500

Including: Locomotive 671, Coal Tender 2671w (Penn), Lehigh Valley Cargo Car 2456, Refrigerator Car 3462, Lumber Car 3451, Caboose 2357. RR Crossing Signal 154, Flagman 1045, Beacon 394, Gate 252, Type TW Transformer 35 w, Type A Transformer 90w, Multi control transformer 110 rw (whistle and direction). Track. Catalogues, tunnel, station. etc.
