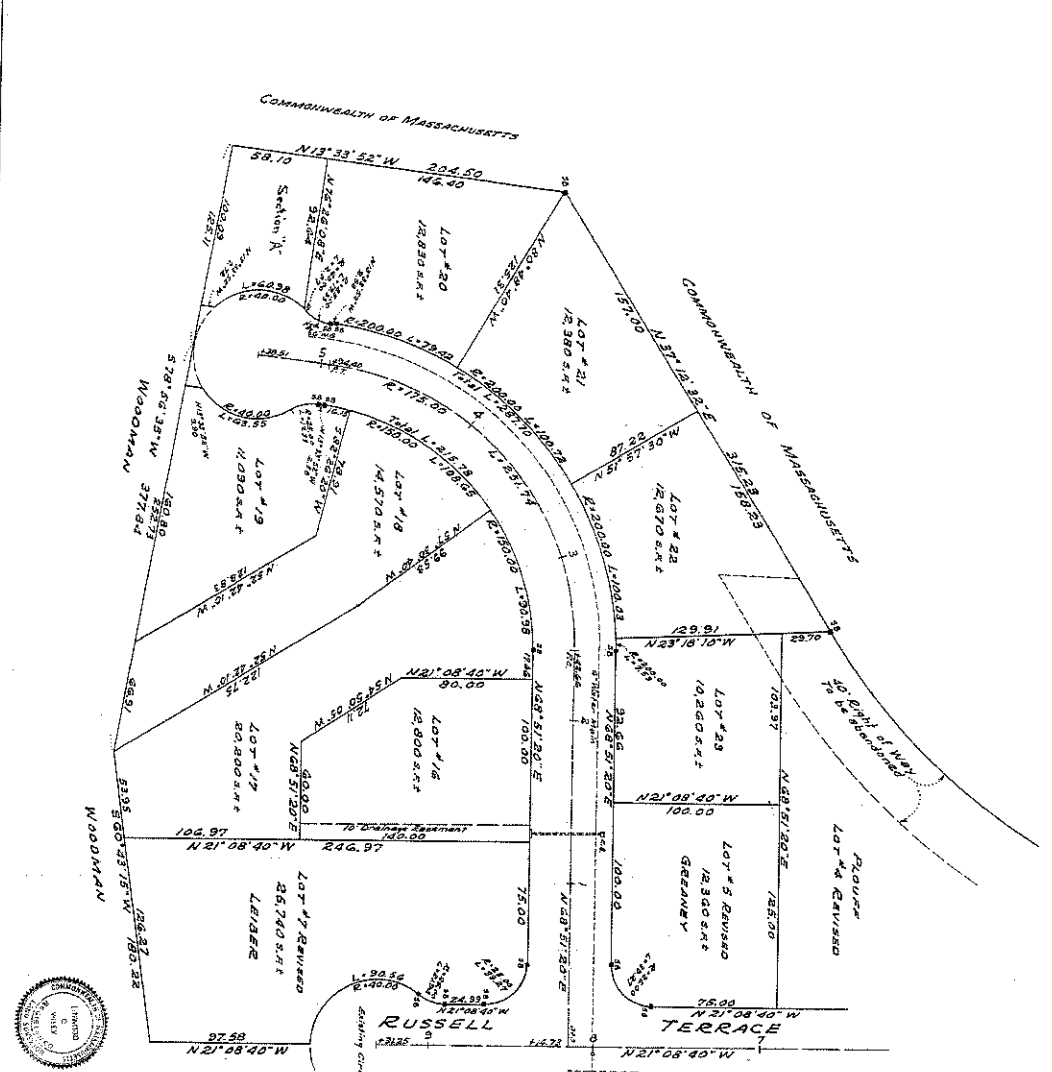


PROFILE OF RUSSELL TERRACE EXTENSION Scale Hor 1"=40' Vert 1"=4'



RUSSELL TERRACE EXT.
NEWBURYPORT, MASS.
 CHARLES WILSON, Surveyor
 20 North St., Newburyport, Mass.
 Scale 1"=40' Date 4/9/68

| | |
|---|--|
| Planning Board Edward C. Scarborough, Chairman Charles Wilson, etc. | Application filed for this project Record Plan and Mapping Date Plan Approved |
|---|--|

PLAN BOOK 94 PLAN 49
 STATE RECORDING DEPARTMENT
 100 STATE STREET, NEWBURYPORT, MASS. 01960
 RECORDED
 APR 11 1968
 BY [Signature]
 INDEXED
 APR 11 1968
 BY [Signature]

